

FRONT ELEVATION



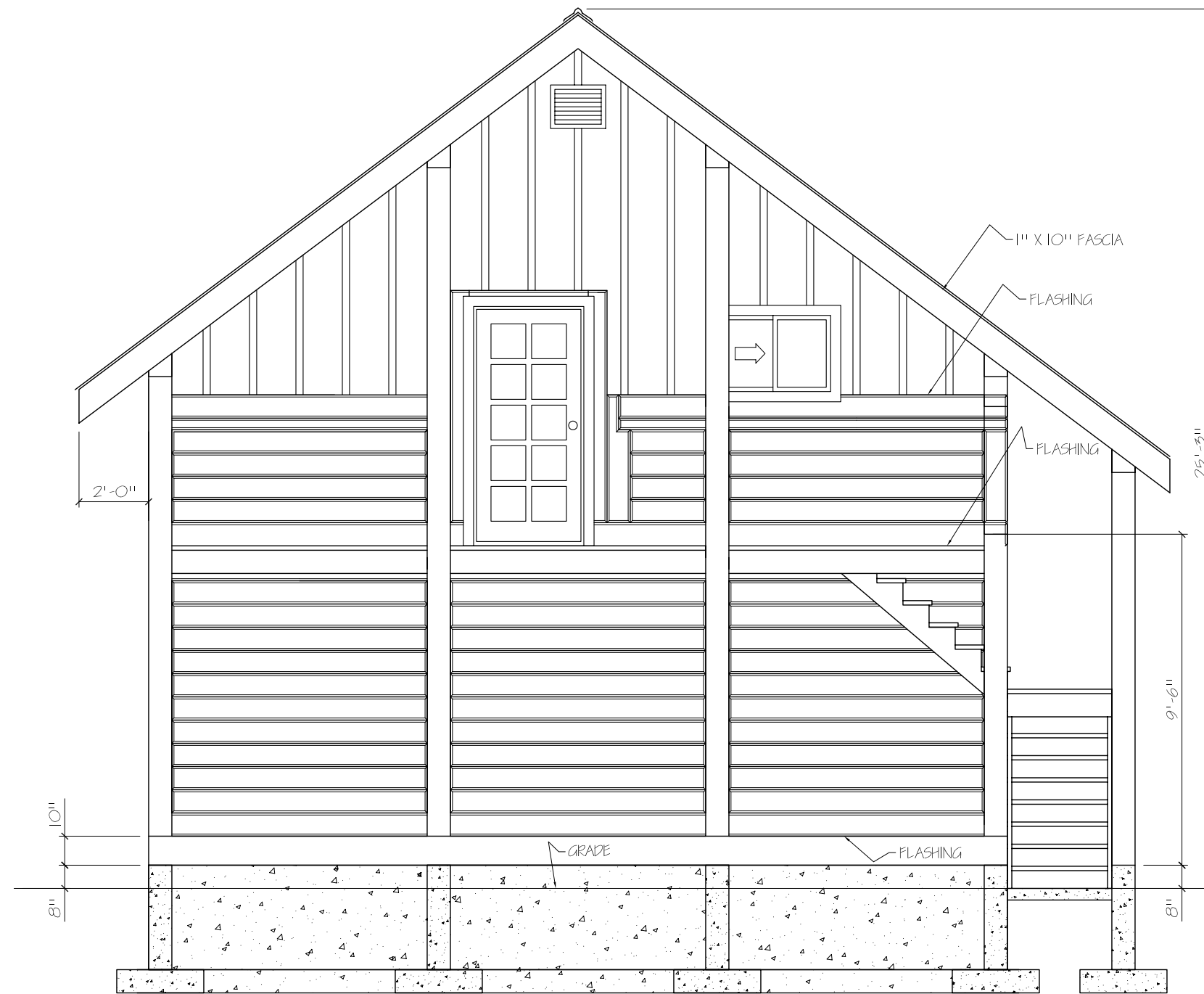
| | | |
|---------------------|---------------------------------|-----|
| SCALE: 1/4" = 1'-0" | DRAWN BY: P HALPER | |
| DATE: 07 FEB 2011 | REVISED: | |
| KLONDIKE 2 24 X 24 | | REV |
| FRONT ELEVATION | DRAWING NUMBER KLONDIKE2-001 | |



RIGHT ELEVATION



| | | |
|---------------------|---------------------------------|-----|
| SCALE: 1/4" = 1'-0" | DRAWN BY: P. HALPER | |
| DATE: 07 FEB 2011 | REVISED: | |
| KLONDIKE 2 24 X 24 | | REV |
| RIGHT ELEVATION | DRAWING NUMBER KLONDIKE2-002 | |



REAR ELEVATION



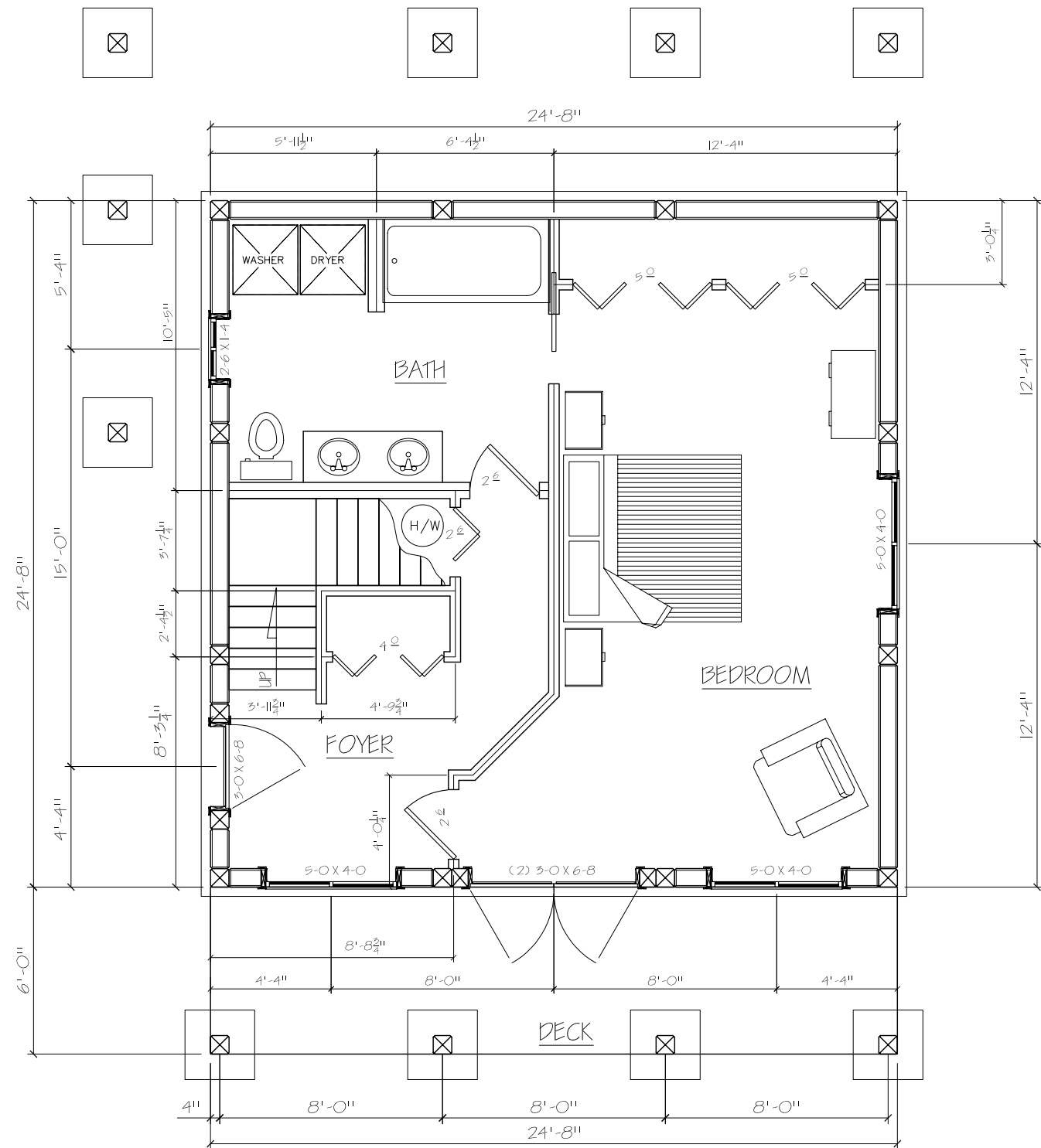
| | | |
|---------------------|---------------------------------|-----|
| SCALE: 1/4" = 1'-0" | DRAWN BY: P. HALPER | |
| DATE: 07 FEB 2011 | REVISED: | |
| KLONDIKE 2 24 X 24 | | REV |
| REAR ELEVATION | DRAWING NUMBER KLONDIKE2-003 | |



LEFT ELEVATION



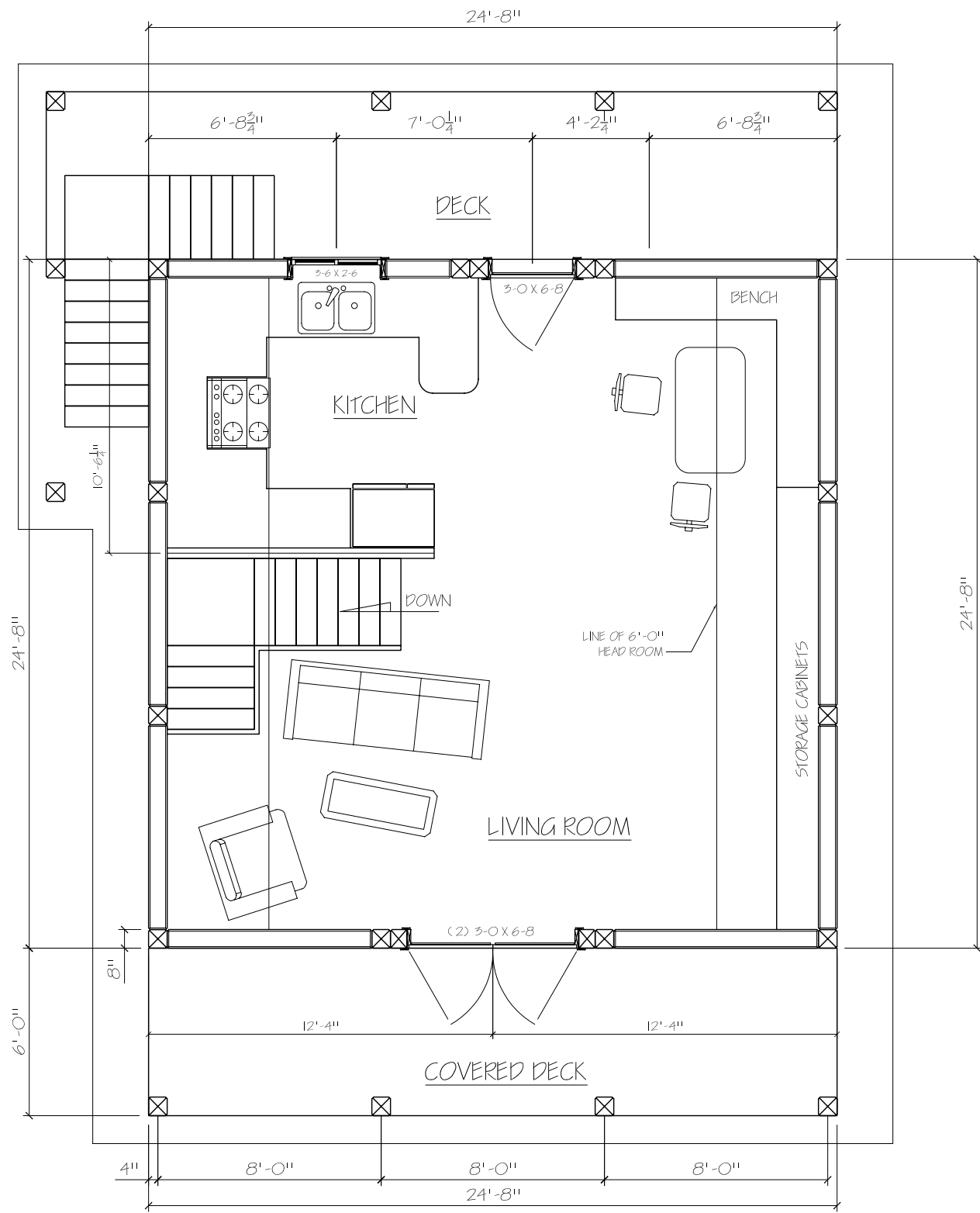
| | |
|---------------------------------|--------------------|
| SCALE: 1/4" = 1'-0" | DRAWN BY: P HALPER |
| DATE: 07 FEB 2011 | REVISED: |
| KLONDIKE 2 24 X 24 | |
| LEFT ELEVATION | REV |
| DRAWING NUMBER KLONDIKE2-004 | |



MAIN FLOOR PLAN
FLOOR AREA 608 SQFT



| | | | |
|----------------------|--|---------------------------------|-----|
| SCALE: 3/16" = 1'-0" | | DRAWN BY: P. HALPER | |
| DATE: 07 FEB 2011 | | REVISED: | |
| KLONDIKE 2 24 X 24 | | | REV |
| MAIN FLOOR PLAN | | DRAWING NUMBER KLONDIKE2-005 | |



SECOND FLOOR PLAN
FLOOR AREA 608 SQFT



| | |
|-----------------------------|--|
| SCALE: 3/16" = 1'-0" | DRAWN BY: P. HALPER |
| DATE: 07 FEB 2011 | REVISED: |
| KLONDIKE 2 24 X 24 | |
| SECOND FLOOR PLAN | DRAWING NUMBER KLONDIKE2-006 |

REV